



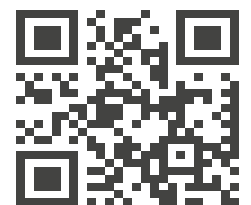
HEPI

DOM-EX



DOM-EX DIVISION OVERVIEW

Used and Rebuilt Parts and Components



WWW.HEPI.COM



WHY HEPI?

HEPI is a global leader in providing remanufactured parts, components, and comprehensive solutions for the mining and heavy equipment industries. Our commitment to customer success is rooted in our three pillars of value, guiding everything we do:



**Customer-Centric
Excellence**



**Innovative Precision
Unmatched Quality**



**Optimized Total Cost
of Ownership**

OUR SOLUTIONS

MOBILE MINING SOLUTIONS

Complete Drivetrain Solutions for Mining Equipment

FIXED PLANT PROCESSING

Crusher Liner Development, Parts, and Wear Products

COOLING SOLUTIONS

Cooling System Applications, Remanufacturing Services, and Engineering Innovation

DOM-EX

Used and Rebuilt Component, Parts and Services for Mining Equipment

40+

**Multi-Use
Facilities**

**Across Seven
Countries, Six
Engineering
Centers**

TRUSTED WORLDWIDE SINCE 1982



With a legacy spanning 40+ years, Dom-Ex has grown from its roots in Hibbing, Minnesota into a global provider of cost-effective solutions for the mining and heavy equipment industry. Our operations reach key international mining hubs—including North America, Australia and South America—enabling us to support clients across six continents.

Our global inventory of 100,000+ line items ranks among the industry's most extensive. From engines and transmissions to final drives, suspensions, differentials, and track frames, we support haul trucks, dozers, graders, loaders, hydraulic shovels, and more—across a wide range of mining applications.

One of Dom-Ex's unique strengths is our ability to purchase used equipment that's no longer financially viable for your operation. If you have assets to offload, our team is ready to buy—helping you recover value while we extend the life of your equipment through reuse and redistribution.

By distributing components strategically in high-demand regions, we reduce lead times and maximize uptime. Our Hibbing headquarters anchors our capabilities: a fully equipped service and rebuild facility with advanced tooling, diagnostics, and expert technicians trained to handle the largest mobile mining assets.

Dom-Ex is more than a supplier—we're a global partner providing efficiency, productivity, and performance.



SAFETY AND QUALITY

Built on a Safety-First Culture: HEPI Dom-Ex never compromises on safety or environmental compliance. Our "See You Tomorrow" philosophy reflects our commitment to reinforcing safe work practices and driving positive outcomes across every operation.

Quality: Our components are sourced, rebuilt, and inspected to meet the highest standards required for reliable performance in the field. We continually review and improve our quality systems to ensure consistency and operational integrity for our customers.



HEPI

DOM-EX

GLOBAL OPERATIONS

A GLOBAL SOLUTION

HEPI Dom-Ex has built a global support network to serve mining operations across North America, South America, Africa, and Australia. With facilities in key regions and a team of technical experts, logistics specialists, and commercial managers, we provide fast, flexible access to new, rebuilt, and qualified used components—whether sourced locally or internationally.

By combining global reach with local responsiveness, Dom-Ex gives customers reliable alternatives to OEM's, helping them keep their critical fleets moving while lowering their total cost of ownership.



WHEN TO CALL DOM-EX?

1. You have a component that is beyond economical repair
2. In need of your own spare component
3. When you need hard-to-find parts or components that others can't deliver quickly
4. You have equipment and/or surplus inventory for sale

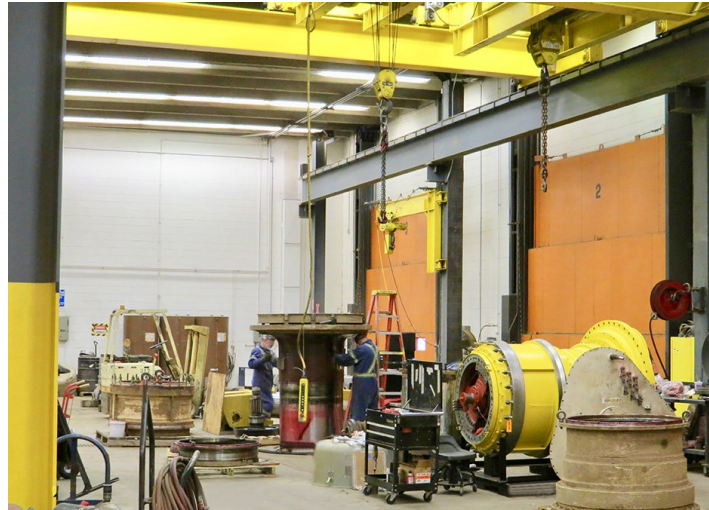


FACILITY CAPABILITIES

HIBBING, MN HEADQUARTERS, WORKSHOP, AND WAREHOUSE

Located in Hibbing, Minnesota, our 17,000 sq. ft. facility is the cornerstone of our operations. With lift capabilities up to 60,000 lbs and a warehouse stocked with more than 100,000 parts and components, our purpose-built facility is equipped to support the mining industry's largest and most demanding components.

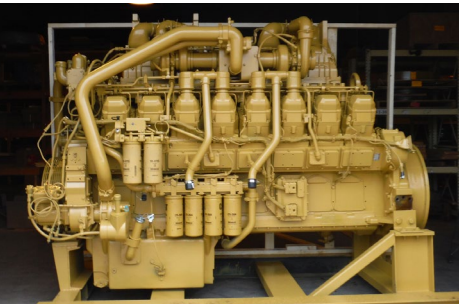
Our experienced technicians service parts from major OEMs including Caterpillar and Komatsu, performing everything from rebuilds to detailed inspections. Whether evaluating used components for reuse or building to OEM or customer specifications, our team helps extend component life and reduce overall costs.



STRATEGIC GLOBAL SUPPORT

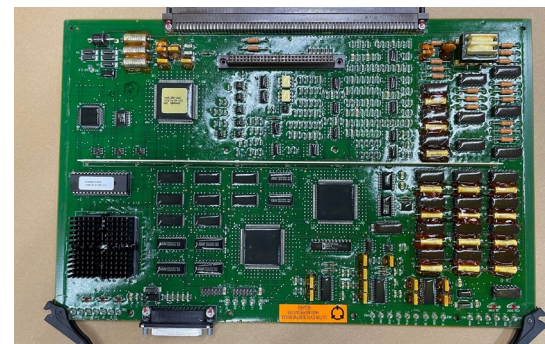
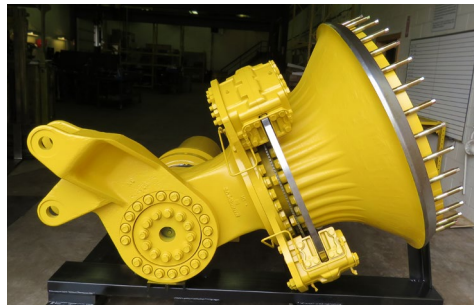
While Hibbing remains our operational core, our global footprint continues to grow. We now hold inventory and provide support across key regions, including North America, South America, Australia, and Africa. By staying close to where mining activity occurs, we are ready to assist when and where it's needed.

Sales managers based in the U.S., Canada, South America, South Africa, and Australia work closely with customers and our internal teams to move inventory quickly, reliably, and regionally—reducing lead times and increasing equipment uptime.



MECHANICAL DRIVE TRUCKS

- Final Drives
- Engines
- Dump Bodies
- Sheet Metals
- Transmissions
- Radiators
- Axle Housings
- Chassis
- Torque Converters
- Hydraulic Cylinders
- Tires/Rims
- Wheel Groups (Front Corners)
- Fuel/Hydraulic Tanks
- Operator Cabins



ELECTRICAL DRIVE TRUCKS

- Wheel Motors
- Electrical Cabinets
- IGBTs
- Operator Cabins
- Alternators
- Armatures/Rotors
- Engines
- Axle Housings
- Front Wheel Groups (Front Corners)
- Stators
- Radiators
- Tires/Rims
- Blown Grid Assemblies
- Contactors
- Hydraulic Cylinders
- Chassis
- Grid Blower Motors
- Capacitors
- Dump Bodies
- Fuel/Hydraulic Tanks
- Control Cards

DOZERS

- Final Drives
- Steering, Clutch, and Brake Assemblies
- Trans/Bevel Assemblies
- Torque Converters
- Track Frames
- Blades
- Push Arms
- Rippers
- Operator Cabins
- Engines
- Radiators
- Hydraulic Cylinders
- Fuel/Hydraulic Tanks
- Track Groups
- Sheet Metal
- Chassis
- Undercarriage Components



- Final Drives
- Transmissions
- Torque Converters
- Boom Arms
- Buckets and Bucket Links
- Front/Rear Frames
- Engines
- Radiators
- Hydraulic Cylinders
- Fuel/Hydraulic Tanks
- Axle Housings
- Tires/Rims
- Sheet Metal



SHOVELS AND EXCAVATORS

- Final Drives, Propel Transmissions, and Propel Motors
- Swing Transmissions and Swing Motors
- Track Frames and Track Groups
- Undercarriage Components
- Slew Bearings
- Revolving Frames
- Car Bodies
- Sheet Metal
- Booms/Sticks
- Buckets
- Operator Cabins
- Engines
- Radiators
- Hydraulic Cylinders
- Fuel/Hydraulic Tanks



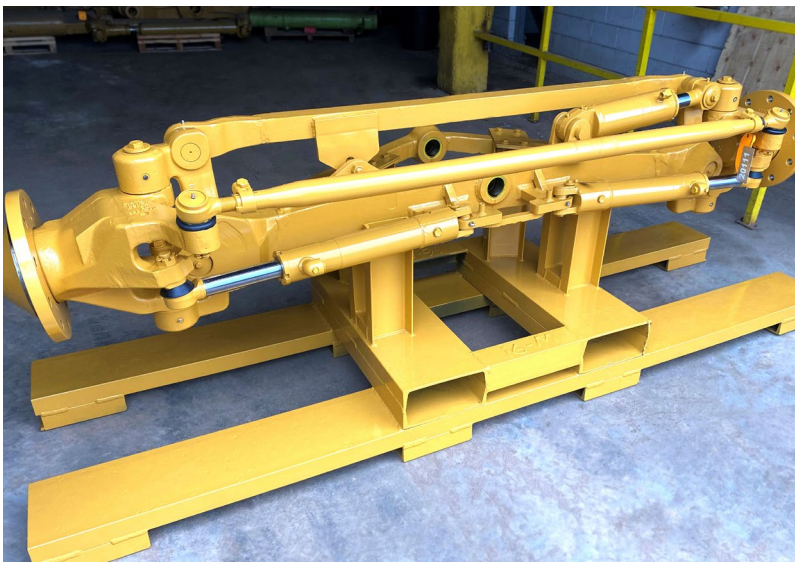


HEPI

DOM-EX

GRADERS

- Final Drives
- Transmissions
- Wheel and Brake Groups
- Circle Bar Assembly
- Drawbar Assemblies
- Front Axle Assemblies
- Moldboards
- Rippers
- Operator Cabins
- Engines
- Radiators
- Hydraulic Cylinders
- Fuel/Hydraulic Tanks
- Tandem Housings
- Tires/Rims
- Sheet Metal
- Chassis



SURPLUS INVENTORY AND CONSIGNMENT



The HEPI Dom-Ex team has specialized in surplus inventory for more than 40 years. Surplus inventory can come in many forms, including parked equipment, new or rebuilt components, as well as excess warehouse stock.

The Dom-Ex Team works with customers across the globe to identify inventory opportunities and market valuation of your equipment. An offer is then made to either purchase the surplus inventory or to develop a consignment program to assist with the promotions and sale of inventory to our global customer base.





Global Locations Local Support



LinkedIn :

[linkedin.com/company/h-e-parts-international](https://www.linkedin.com/company/h-e-parts-international)



Facebook :

<https://www.facebook.com/hepartsinternational>



HEPI



Mining Solutions

Cooling Solutions

Dom-Ex

Crushing Solutions

WWW.HEPI.COM

Contact Us Today!



HEPI replacement parts are compatible with the makes and/or models of the third-party equipment described. HEPI is not an authorized repair facility of these third parties and it does not have an affiliation with any manufacturers of these third-party products. All brands, original equipment manufacturer (OEM) part numbers or references are owned by the respective OEM entities or their affiliates. These terms are used by HEPI for identification and cross reference purposes only and are not intended to indicate affiliation with, or approval by the OEM, of HEPI or its products.