



Components and Parts for Komatsu 830E Haul Trucks



HEPI

WHY HEPI?

HEPI is a global leader in providing remanufactured parts, components, and comprehensive solutions for the mining and heavy equipment industries. Our commitment to customer success is rooted in our three pillars of value, guiding everything we do:



Innovative Precision
Unmatched Quality



Customer-Centric
Excellence



Optimized Total Cost
of Ownership

OUR SOLUTIONS

MOBILE MINING SOLUTIONS

Complete Drive Train Solutions for Mining Equipment

FIXED PLANT PROCESSING

Crusher Liner Development, Parts, and Wear Products

COOLING SOLUTIONS

Cooling system applications, remanufacturing services, and engineering innovation

DOM-EX

Used and Rebuilt Component Parts and Services for Mining Equipment



40+

**MULTI-USE
FACILITIES ACROSS SEVEN COUNTRIES,
SIX ENGINEERING CENTERS**

MOBILE MINING OVERVIEW

COMPLETE DRIVETRAIN SOLUTIONS

HEPI provides a complete range of mobile mining solutions, from wheel groups and suspensions to transmissions and spare parts. Our products are engineered for durability and efficiency, ensuring your equipment runs at peak performance.



DRIVETRAIN CAPABILITIES

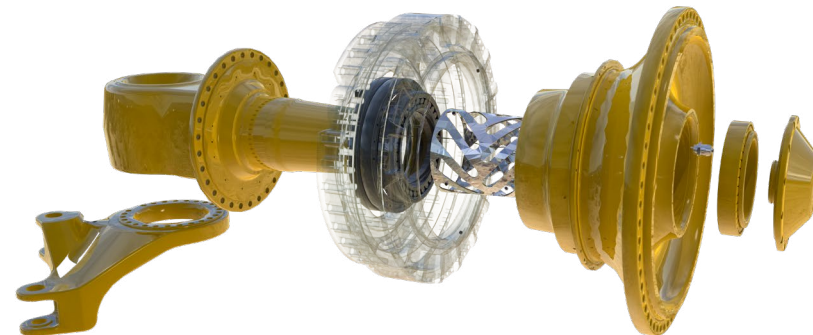
- Wheel Groups and Front Corner Systems
- Front and Rear Suspension
- Transmissions, Torque Converters, and Differentials
- Pin Solutions and Upgrades
- Cooling Systems
- Engines

PROPRIETARY HEPI ENHANCEMENTS

At HEPI, we are committed to providing innovative solutions through our proprietary HEPI enhancements with a dedication to improving performance, reducing cost per hour and on time deliveries to reduce downtime for our customers. With a focus on wheel group enhancements, our team utilizes proprietary technology such as:

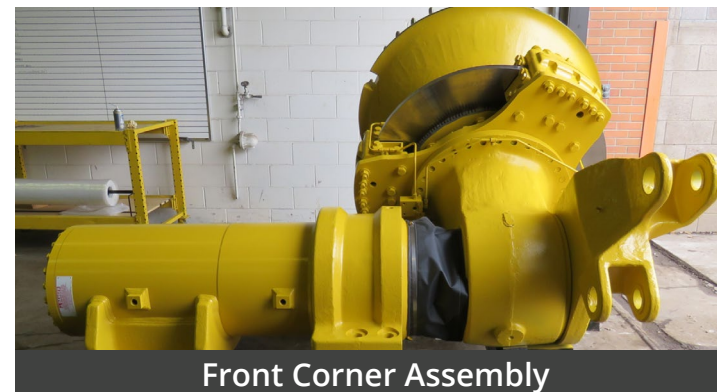
The HEPI Control Fit wheel bearing set up:

- Flexible Spacer and Hardened Spacer
- Proprietary Bearing Design/Specification
- Proprietary Bearing Fits
- Proprietary Preload Adjustment



POWERTRAIN COMPONENTS

DESCRIPTION	OEM #	ALT #
Rear Wheel Motor	5GEB25C	
Traction Alternator	5GTA41B	
Blower Motor	5GY19	GE0017; XA4146
Front Wheel Group	EM3840	

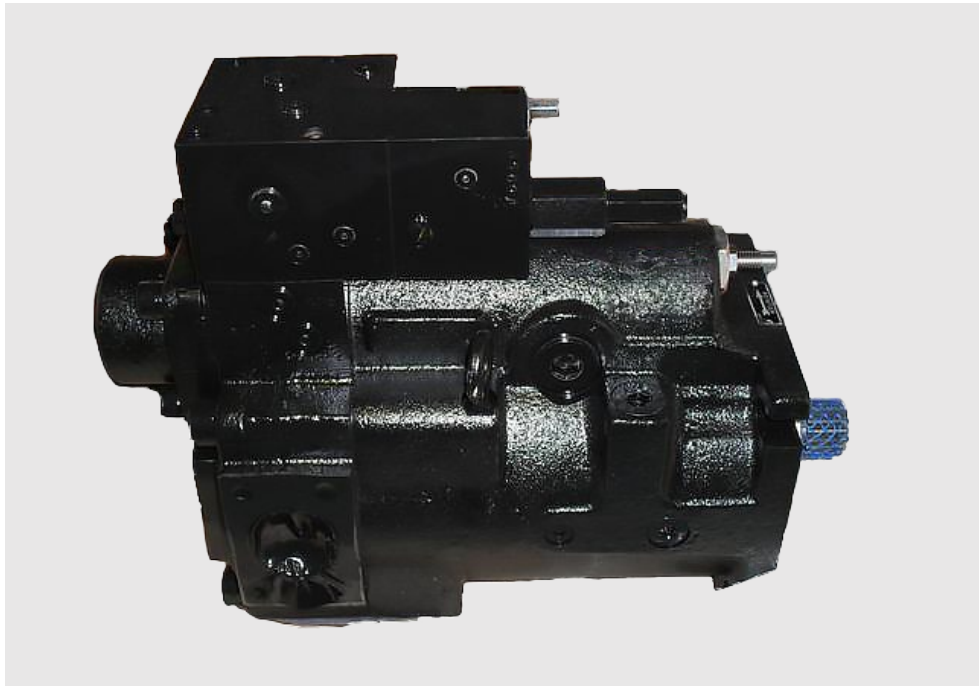


SUSPENSIONS, CYLINDERS & STEERING

DESCRIPTION	OEM #	ALT #
CYLINDERS & SUSPENSIONS		
Rear Suspension	EM8838	
Front Suspension	EJ6895	
Steering Cylinder	EL7952	
Hoist Cylinder	EM8353	
STEERING COMPONENTS		
Pivot Eye Assembly	XB2447SERV	
Steering Pin Kit	58E-MP-AK020	
Body Pivot Pin Kit	58F-MP-AK030	
Pivot Eye Pin Kit	58E-MP-AK070	
Rear Suspension Pin Kit	58E-mp-AK060	



DESCRIPTION	OEM #
Steering Pump	58B-60-00081
Hoist Pump	PB8761



58B-60-00081 | Steering Pump



PB8761 | Hoist Pump



Gear Cutting For a Pump

ADDITIONAL PRODUCTS

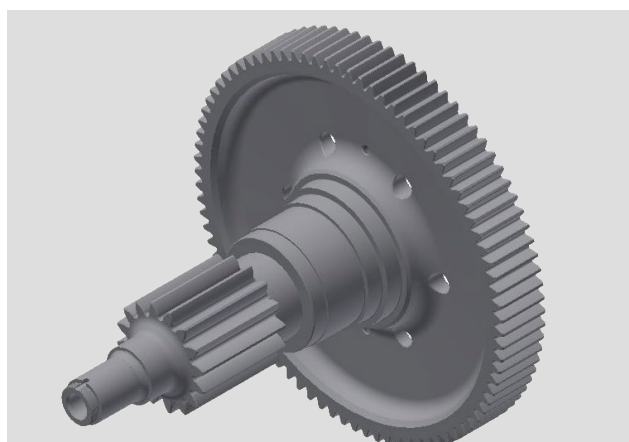
DESCRIPTION	OEM #	ALT #
IGBT Panel - Negative	17FM797A3	GE1256
IGBT Panel - Positive	17FM796A1	GE1255
Electrical-Contact Kit	GE1836	
Contactor	GE1843	
Spherical Bearing	PC1291	
Planetary Gear	XA3384	
Control Cards	Multiple P/Ns	



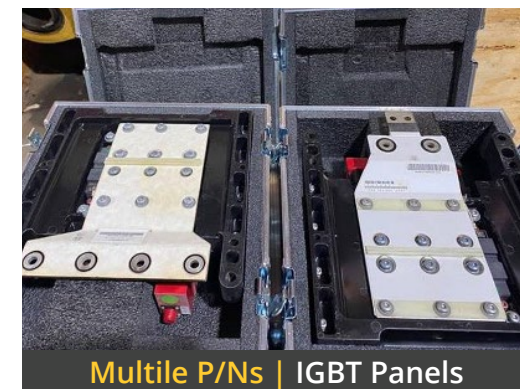
PC1291 | Spherical Bearing



Multiple P/Ns | Control Cards



XA3384 | Planetary Gear



Multiple P/Ns | IGBT Panels

Note: In addition to our service exchange product offering, we also carry distributed product from leading brands such as Airflex, Bendix, Carlisle, Char-Lynn, Dana, Danfoss, Denison, Durapac, Eaton, Enerpac, Goetze, Graco, Lincoln, Mechanics Driveshaft, Mico, Midland, Nordic Lights, NTN Bearings, OTC, Parker, Power Team, Raybestos, RBC, Rexroth, Rockford Clutch, Rockwell International, Simplex, SKF, Spicer, Timken, Tyrone, Vickers, and Wichita. Please contact your local representative for more information.



Global Locations Local Support

Linkedin:
[linkedin.com/company/h-e-parts-international/](https://www.linkedin.com/company/h-e-parts-international/)

Facebook:
[facebook.com/hepartsinternational](https://www.facebook.com/hepartsinternational)



Mining Solutions

Cooling Solutions

Dom-Ex

Crushing Solutions

WWW.HEPI.COM

Contact Us Today!



HEPI replacement parts are compatible with the makes and/or models of the third-party equipment described. HEPI is not an authorized repair facility of these third parties and it does not have an affiliation with any manufacturers of these third-party products. All brands, original equipment manufacturer (OEM) part numbers or references are owned by the respective OEM entities or their affiliates. These terms are used by HEPI for identification and cross reference purposes only and are not intended to indicate affiliation with, or approval by the OEM, of HEPI or its products.