



Components and Parts for CAT 793F Haul Trucks



HEPI

WHY HEPI?

HEPI is a global leader in providing remanufactured parts, components, and comprehensive solutions for the mining and heavy equipment industries. Our commitment to customer success is rooted in our three pillars of value, guiding everything we do:



Innovative Precision
Unmatched Quality



Customer-Centric
Excellence



Optimized Total Cost
of Ownership

OUR SOLUTIONS

MOBILE MINING SOLUTIONS

Complete Drive Train Solutions for Mining Equipment

FIXED PLANT PROCESSING

Crusher Liner Development, Parts, and Wear Products

COOLING SOLUTIONS

Cooling system applications, remanufacturing services, and engineering innovation

DOM-EX

Used and Rebuilt Component Parts and Services for Mining Equipment



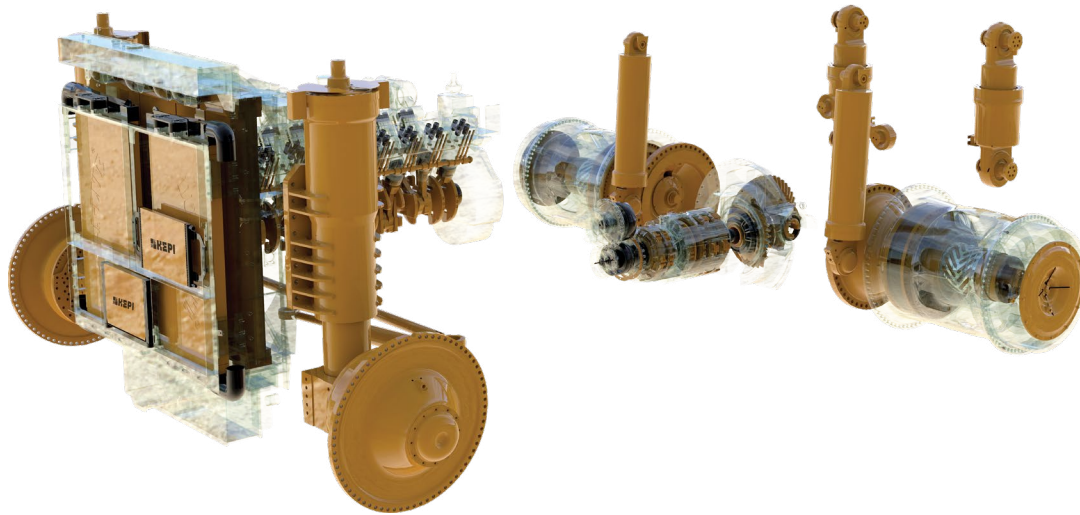
40+

**MULTI-USE
FACILITIES ACROSS SEVEN COUNTRIES,
SIX ENGINEERING CENTERS**

MOBILE MINING OVERVIEW

COMPLETE DRIVETRAIN SOLUTIONS

HEPI provides a complete range of mobile mining solutions, from wheel groups and suspensions to transmissions and spare parts. Our products are engineered for durability and efficiency, ensuring your equipment runs at peak performance.



DRIVETRAIN CAPABILITIES

- Wheel Groups and Front Corner Systems
- Front and Rear Suspension
- Transmissions, Torque Converters, and Differentials
- Pin Solutions and Upgrades
- Cooling Systems
- Engines

PROPRIETARY HEPI ENHANCEMENTS

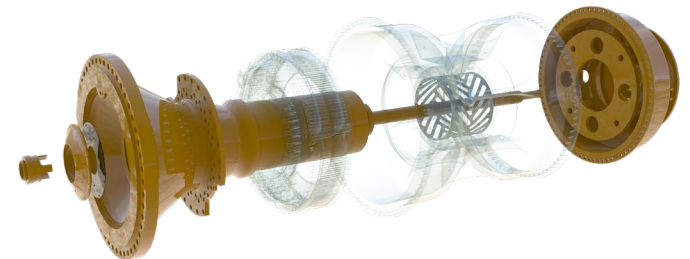
At HEPI, we are committed to providing innovative solutions through our proprietary HEPI enhancements with a dedication to improving performance, reducing cost per hour and on time deliveries to reduce downtime for our customers. With a focus on wheel group enhancements, our team utilizes proprietary technology on final drives such as:

The HEPI Control Fit Wheel Bearing Setup:

- Flexible Spacer and Hardened Spacer
- Proprietary Bearing Design/Specification
- Proprietary Bearing Fits
- Proprietary Preload Adjustment

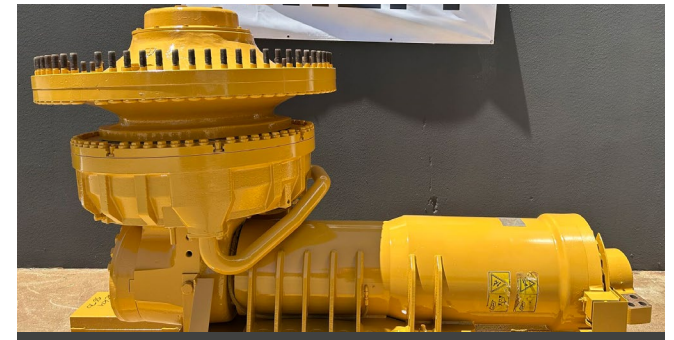
The HEPI Contamination Seal:

- Proprietary Isolation Seal
- Proprietary Contamination Guards and Contamination Kits



POWERTRAIN COMPONENTS

DESCRIPTION	OEM #	ALT #
Front Wheel Group (Spindle, Hub, & Brake) - Extended Life	280-2057	216-1716
Front Brake Only - Extended Life	188-5020	
Front Wheel Group (Spindle, Hub, & Brake) - Standard	470-8606	252-7174; 8X0270
Front Brake Only - Standard	470-8607	334-5020; 8X0222
Torque Converter - With Housing	279-2521	
Transmission	479-1630	449-9612
Differential	466-7421	466-3323; 280-1609
Rear Wheel Group - Extended Life	280-2052	302-8164
Rear Brake Only - Extended Life	188-5019	
Rear Wheel Group - Standard	280-2051	302-8162; 246-5264
Rear Brake Only - Standard	334-5019	
C175-16 Engine	563-2134	
Driveline	303-2505	
Driveline/U-Joint GP	397-8099	



Multiple P/Ns | Front Corner GP - Ext Life



280-2052 | Rear Wheel Group - Ext Life



479-1630 | Transmission



466-7421 | Differential



Multiple P/Ns | Front Corner GP - STD

SUSPENSIONS, CYLINDERS & STEERING

DESCRIPTION	OEM #	ALT #
CYLINDERS & SUSPENSIONS		
Cylinder Hoist	121-2071	295-5708
Rear Suspension	295-5709	106-3722
Pin Kit - Colleted	A7075	
Pin Kit - Standard/OEM	203-9439S	
Front Suspension	295-5706	9T8910; 0R8433
STEERING COMPONENTS		
Cylinder - Steering	9T8912	
Link GP - Steering	2A6946	
Ball Stud	8X9620	
Center Arm	207-7321	



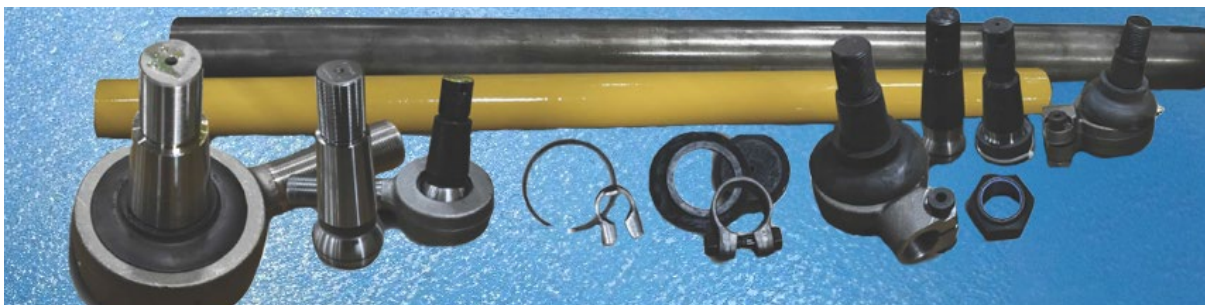
295-5709 | Rear Suspension



121-2071 | Hoist Cylinder



A7075 | Colleted Pin Kit



8X9620 | Ball Stud & Tie Rods



295-5706 | Front Suspension

HYDRAULICS, PUMPS & VALVES

DESCRIPTION	OEM #
Pump Drive	386-4902
Pump GP	291-7263
Pump GP	390-6120
Transmission/Torque Pump	319-4166



390-6120 | Brake Pump



Hydraulic Pump



Gear Cutting for a Pump

COOLING SYSTEMS & ADDITIONAL PRODUCTS

DESCRIPTION	OEM #
Radiator Module Assembly	335-8380
Charge Air Cooler	331-5138



Note: In addition to our service exchange product offering, we also carry distributed product from leading brands such as Airflex, Bendix, Carlisle, Char-Lynn, Dana, Danfoss, Denison, Eaton, Enerpac, Goetze, Graco, Lincoln, Mechanics Driveshaft, Mico, Midland, Nordic Lights, NTN Bearings, OTC, Parker, Power Team, Raybestos, RBC, Rexroth, Rockford Clutch, Rockwell International, Simplex, SKF, Spicer, Timken, Tyrone, Vickers, and Wichita. Please contact your local representative for more information.



Global Locations Local Support

Linkedin:
[linkedin.com/company/h-e-parts-international/](https://www.linkedin.com/company/h-e-parts-international/)

Facebook:
[facebook.com/hepartsinternational](https://www.facebook.com/hepartsinternational)



Mining Solutions

Cooling Solutions

Dom-Ex

Crushing Solutions

WWW.HEPI.COM

Contact Us Today!



HEPI replacement parts are compatible with the makes and/or models of the third-party equipment described. HEPI is not an authorized repair facility of these third parties and it does not have an affiliation with any manufacturers of these third-party products. All brands, original equipment manufacturer (OEM) part numbers or references are owned by the respective OEM entities or their affiliates. These terms are used by HEPI for identification and cross reference purposes only and are not intended to indicate affiliation with, or approval by the OEM, or HEPI or its products.

JUNE2025