



## Components and Parts for CAT 793F Haul Trucks



# HEPI

## WHY HEPI?

HEPI is a global leader in providing remanufactured parts, components, and comprehensive solutions for the mining and heavy equipment industries. Our commitment to customer success is rooted in our three pillars of value, guiding everything we do:



**Innovative Precision**  
Unmatched Quality



**Customer-Centric**  
Excellence



**Optimized Total Cost**  
of Ownership

## OUR SOLUTIONS

### MOBILE MINING SOLUTIONS

Complete Drive Train Solutions for Mining Equipment

### FIXED PLANT PROCESSING

Crusher Liner Development, Parts, and Wear Products

### COOLING SOLUTIONS

Cooling system applications, remanufacturing services, and engineering innovation

### DOM-EX

Used and Rebuilt Component Parts and Services for Mining Equipment



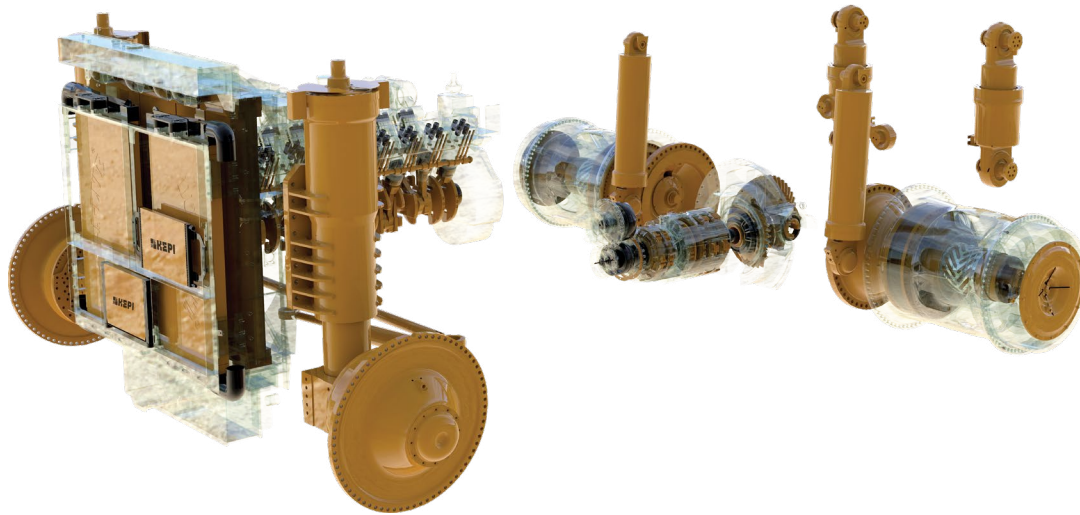
# 40+

**MULTI-USE  
FACILITIES ACROSS SEVEN COUNTRIES,  
SIX ENGINEERING CENTERS**

# MOBILE MINING OVERVIEW

## COMPLETE DRIVETRAIN SOLUTIONS

HEPI provides a complete range of mobile mining solutions, from wheel groups and suspensions to transmissions and spare parts. Our products are engineered for durability and efficiency, ensuring your equipment runs at peak performance.



## DRIVETRAIN CAPABILITIES

- Wheel Groups and Front Corner Systems
- Front and Rear Suspension
- Transmissions, Torque Converters, and Differentials
- Pin Solutions and Upgrades
- Cooling Systems
- Engines

## PROPRIETARY HEPI ENHANCEMENTS

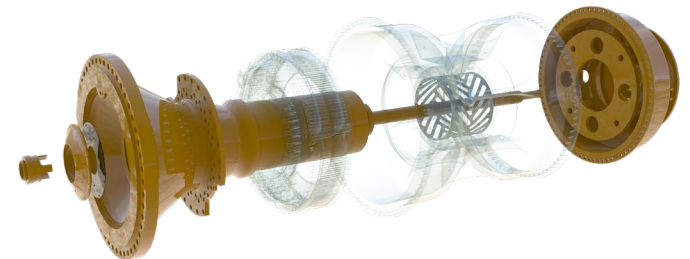
At HEPI, we are committed to providing innovative solutions through our proprietary HEPI enhancements with a dedication to improving performance, reducing cost per hour and on time deliveries to reduce downtime for our customers. With a focus on wheel group enhancements, our team utilizes proprietary technology on final drives such as:

### The HEPI Control Fit Wheel Bearing Setup:

- Flexible Spacer and Hardened Spacer
- Proprietary Bearing Design/Specification
- Proprietary Bearing Fits
- Proprietary Preload Adjustment

### The HEPI Contamination Seal:

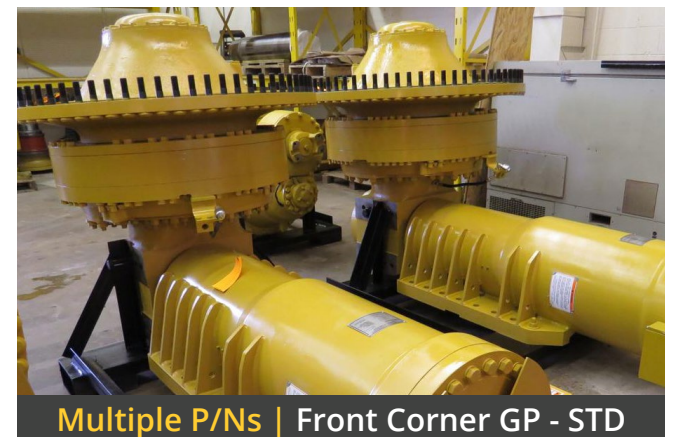
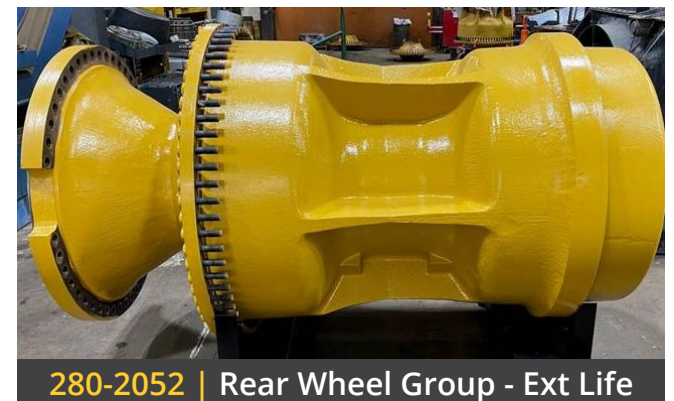
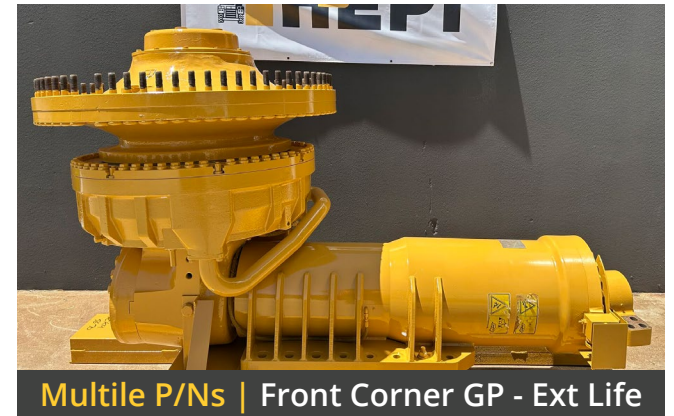
- Proprietary Isolation Seal
- Proprietary Contamination Guards and Contamination Kits





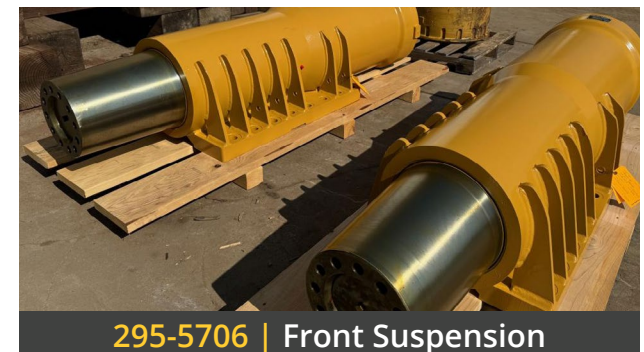
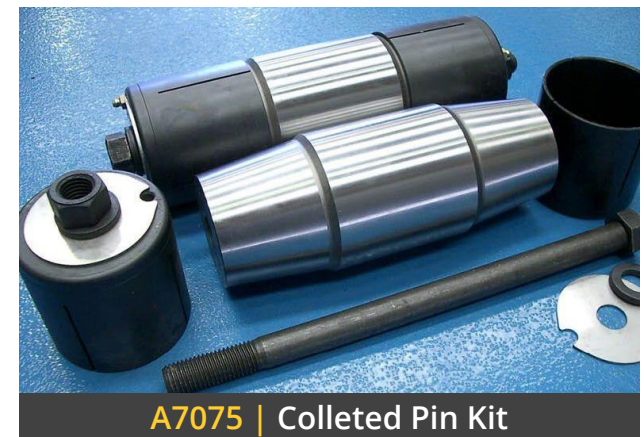
# POWERTRAIN COMPONENTS

DESCRIPTION	OEM #	ALT #
Front Wheel Group (Spindle, Hub, & Brake) - Extended Life	280-2057	216-1716
Front Brake Only - Extended Life	188-5020	
Front Wheel Group (Spindle, Hub, & Brake) - Standard	470-8606	252-7174; 8X0270
Front Brake Only - Standard	470-8607	334-5020; 8X0222
Torque Converter - With Housing	279-2521	
Transmission	479-1630	449-9612
Differential	466-7421	466-3323; 280-1609
Rear Wheel Group - Extended Life	280-2052	302-8164
Rear Brake Only - Extended Life	188-5019	
Rear Wheel Group - Standard	280-2051	302-8162; 246-5264
Mounting Bolts	7X2583	
Mounting Bolt Kit	793-MTGBOLTKIT	
Wheel Studs	8X0274	
Rear Brake Only - Standard	334-5019	
C175-16 Engine	563-2134	
Driveline	303-2505	
Driveline/U-Joint GP	397-8099	



# SUSPENSIONS, CYLINDERS & STEERING

DESCRIPTION	OEM #	ALT #
<b>CYLINDERS &amp; SUSPENSIONS</b>		
Hoist Cylinder	121-2071	295-5708
Upper Hoist Pin	499-2596	Previous: 237-0417
Body Pivot Pin	468-4071	Previous: 715517
Body Pads	219-7595	457-4418
Rear Suspension	295-5709	106-3722
4-Bar Link Assembly (Pin Kit Options Below)	281-3338*	
- Colleted Pin (Lubricated) - Bearings Not Included	CRN-50133	
- Colleted Pin (Maintenance Free) - Includes MF Bearing	CRN-50129	
- Colleted Pin (Maintenance Free) - Without Bearing	CRN-50129S	
Rear Suspension Colleted Pin Kit	A7075	
Rear Suspension Pin Kit - Standard/OEM	203-9439S	
Rear Suspension Pin	203-9439	
Front Suspension	295-5706	9T8910; 0R8433
<b>STEERING COMPONENTS</b>		
Cylinder - Steering	9T8912	
Link GP - Steering	2A6946	
Ball Stud	8X9620	
Center Arm	207-7321	



\*Enhancement option to install maintenance-free bearings. This eliminates grease consumption, injector maintenance, and may extend bearing life



# HYDRAULICS, PUMPS & VALVES

DESCRIPTION	OEM #
Pump Drive	386-4902
Pump GP	291-7263
Pump GP	390-6120
Transmission/Torque Pump	319-4166



390-6120 | Brake Pump



Hydraulic Pump



Gear Cutting for a Pump

# COOLING SYSTEMS & ADDITIONAL PRODUCTS

DESCRIPTION	OEM #
COOLING SYSTEMS	
Radiator Module Assembly	335-8380
Charge Air Cooler	331-5138
ADDITIONAL PRODUCTS	
Clamp; V-Band	2473393
Exhaust Bellows	3157909
Exhaust Bellows	4435940
Exhaust Clamps	4674241
Clamp V-Band	4906439
Exhaust Bellows	3543510
Bellows	4853800



Note: In addition to our service exchange product offering, we also carry distributed product from leading brands such as Airflex, Bendix, Carlisle, Char-Lynn, Dana, Danfoss, Denison, Eaton, Enerpac, Goetze, Graco, Lincoln, Mechanics Driveshaft, Mico, Midland, Nordic Lights, NTN Bearings, OTC, Parker, Power Team, Raybestos, RBC, Rexroth, Rockford Clutch, Rockwell International, Simplex, SKF, Spicer, Timken, Tyrone, Vickers, and Wichita. Please contact your local representative for more information.



# Global Locations Local Support

Linkedin:  
[linkedin.com/company/h-e-parts-international/](https://www.linkedin.com/company/h-e-parts-international/)

Facebook:  
[facebook.com/hepartsinternational](https://www.facebook.com/hepartsinternational)



Mining Solutions

Cooling Solutions

Dom-Ex

Crushing Solutions

[WWW.HEPI.COM](http://WWW.HEPI.COM)

Contact Us Today!



HEPI replacement parts are compatible with the makes and/or models of the third-party equipment described. HEPI is not an authorized repair facility of these third parties and it does not have an affiliation with any manufacturers of these third-party products. All brands, original equipment manufacturer (OEM) part numbers or references are owned by the respective OEM entities or their affiliates. These terms are used by HEPI for identification and cross reference purposes only and are not intended to indicate affiliation with, or approval by the OEM, or HEPI or its products.

JUNE2025