

INNOVATION.
NOT DUPLICATION.™



 **H-E PARTS**
INTERNATIONAL
MINING SOLUTIONS

BIRRA[™] 830E WHEEL MOTORS

H-E PARTS INTERNATIONAL (H-E PARTS) PROVIDES SOLUTIONS FOR THE ENTIRE DRIVETRAIN, SPECIALIZES IN THE RE-MANUFACTURE OF MAJOR MOBILE EQUIPMENT COMPONENTS, AND OFFERS INDUSTRY LEADING BIRRA[™] PRODUCTS. THE ENHANCED DESIGN FEATURES OF THE BIRRA[™] PRODUCTS DELIVER EXTENDED LIFE, EASE OF MAINTENANCE, AND SUPERIOR PERFORMANCE.

HIGH QUALITY REBUILDS

H-E Parts works closely with our customers to develop and enhance technology to innovate at every opportunity. This dedication to advancement allows us to provide a consistent experience for customers who choose to work with us regionally or globally. This philosophy applies to the development of our Birra[™] re-manufactured 830E wheel motor, which was developed by our Wheel Group Center of Excellence (CoE), providing a highly engineered solution, that would improve performance and efficiencies for our customers.

This product and service expertise coupled with H-E Parts ability to act quickly, provide tailored solutions and supply parts and components globally, allows our customers to benefit from an improved and consistent maintenance strategy. These engineered repairs are carried out on major componentry and performed by highly trained personnel to provide excellent reliability.



DESIGN BENEFITS

CONTINUOUS IMPROVEMENT

With experience taken from re-manufacturing more than 10,000 wheel groups and knowledge of issues with the OEM design, H-E Parts engineers operating in our wheel group CoE have been able to consistently enhance our Birrana™ product line over several decades.

DESIGN AND SERVICE BENEFITS

The Birrana™ re-manufactured 830E wheel motor design, combined with H-E Parts service expertise means that the component will benefit from the same engineering philosophy that goes into all our Birrana™ wheel groups and motors.

This aims to reduce down time, costly component change-outs, and therefore overall maintenance costs. Some of these benefits include:

- 3D CAD models to enable structural analysis for product development and repair feasibility
- Proprietary procedures and specifications developed for non-destructive testing, re-usability, repair, and assembly
- Proprietary tooling designed following global standards to improve productivity and safety during rebuilds
- Specific bolt torques calculated to ensure consistent preload is achieved and maintained through all bolted joints.
- Brake line pressure and oil testing performed throughout rebuild
- No load testing on assembled wheel group
- Fully manage electric motor repairs
- Completely OEM compatible

SERVICE EXCHANGE OPTIONS

H-E Parts have the ability to supply service exchange wheelgroups on certified transport frames, which meet load restraint guidelines.

MAJOR COMPONENT SOLUTIONS

H-E Parts can also provide re-manufactured Birrana™ front corners, StaTerra Power™ engines and powertrain components, COR Cooling™ heat transfer and cooling solutions, as well as an array of Dom-Ex™ rebuilt used and OEM surplus new components.

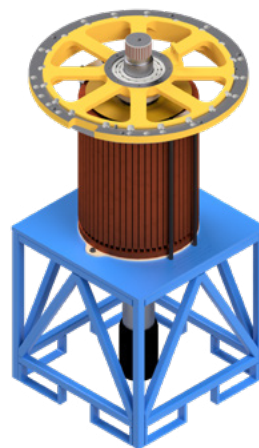
WARRANTY

Birrana™ re-manufactured 830E wheel motors are backed by our standard 6000 hour, 12-month warranty across all of our global facilities.

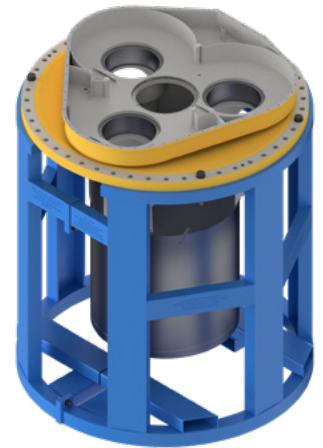
H-E Parts International replacement parts are compatible with the makes and/or models of the third-party equipment described. H-E Parts International is not an authorized repair facility of these third parties and it does not have an affiliation with any manufacturers of these third-party products. All brands, original equipment manufacturer (OEM) part numbers or references are owned by the respective OEM entities or their affiliates. These terms are used by H-E Parts International for identification and cross reference purposes only and are not intended to indicate affiliation with, or approval by the OEM, of H-E Parts International or its products.



Birrana™ remanufactured 830E wheel motor



Rotor repair stand



Spindle repair stand



MINING SOLUTIONS

HEPI06MAY2022

www.h-e-parts.com