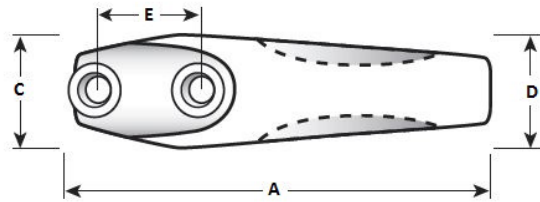
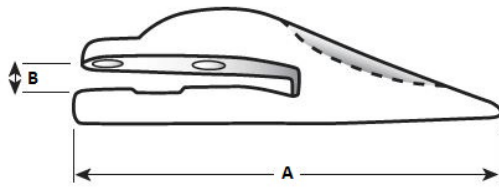
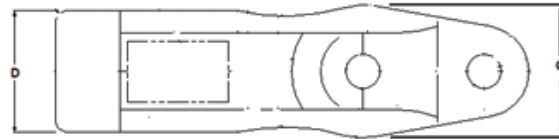
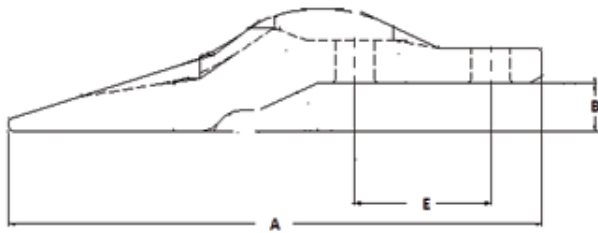


BOLT-ON STYLE UNI-TEETH

TYPE 1



TYPE 2



PART NUMBER	DIMENSION - INCHES (mm)						WEIGHT		FASTENER
	A	B	C	D	E	TYPE	lbs.	kg.	
20W-70-15130	6 3/4" (171)	3/8" (9)	1 1/4" (32)	3/4" (19)	1 1/2" (38)	1	2.5	1.2	4F3649 Plow Bolt, 1F7958 Plow Nut
10E-70-22211	7 1/2" (191)	1/2" (14)	1 1/4" (32)	3/4" (19)	1 3/4" (44)	1	3.5	1.4	3F5108 Plow Bolt, 4K0367 Plow Nut
20T-70-13130	9 3/3" (238)	11/16" (17)	1 1/2" (38)	7/8" (22)	2 3/8" (60)	1	5.5	2.4	3F5108 Plow Bolt, 4K0367 Plow Nut
Y22	8 3/8" (213)	3/4" (19)	1 1/4" (32)	7/8" (22)	1 3/4" (44)	1	4	1.8	3F5108 Plow Bolt, 4K0367 Plow Nut
SX 107	7 1/2" (191)	1/2" (13)	1 1/2" (38)	5/8" (16)	2 1/4" (57)	1	3.5	1.4	1A1460 Cap Screw, 1F7958 Nut
9W1879	11" (279)	7/8" (22)	2" (51)	1 1/8" (29)	3" (76)	1	8	3.6	4F3657 Plow Bolt, 4K0367 Plow Nut
1324720	9-1/4" (235)	7/8" (22)	2-1/2" (65)	2-5/16" (59)	2-3/8" (60)	2	3.9	1.8	1592953 Flat Head Bolt, 8T4778 Lock Nut



WWW.H-EPARTS.COM

NORTH AMERICA
+1 (800) 438-2699

INTERNATIONAL
+1 (305) 477-8000